



## Husqvarna DXR 300

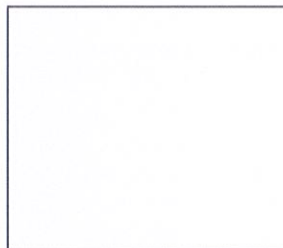
*DXR 300 is our most powerful remote-controlled demolition robot. Together with the hammer, SB 302, it has the highest power-to-weight ratio in its class on the market. With an impressive 22 kW power and only 78cm wide it fits through all normal doorways. This unique combination opens up a very wide application window. The arm delivers long reach, precise positioning of the tool and requires minimal servicing. The outriggers are individually controlled and combined with a large footprint provides superior stability which enables high workload. The robust DXR 300 is a versatile demolition robot for both the construction and process industry. Combine it with a variety of tools like hammers or our compact and versatile crushers and steel shearer.*

*For the toughest applications we recommend our additional feature packages. For DXR 300 we offer hydraulic protection, enhanced cooling and heat protection. This enables you to work with the machine in high ambient temperatures and with the tool in a high radiation heat. The packages can be ordered as accessories or installed direct from factory.*



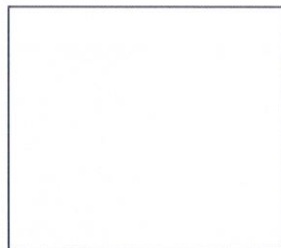
### HIGH KNOCKING FORCE

When used with the SB 302 hammer it has the highest power to weight ratio in its class on the market.



### SUPERB POWER-TO-WEIGHT RATIO

Compact and powerful in relation to the low weight. Its large footprint enables a high workload.



### PRECISE POSITIONING

The set-up of the arm system combined with the software gives smooth and precise positioning of the tool.



### FITS THROUGH ALL NORMAL DOORWAYS

With a compact design, only 78 cm in width the machine can access many working locations.

## Features Husqvarna DXR 300

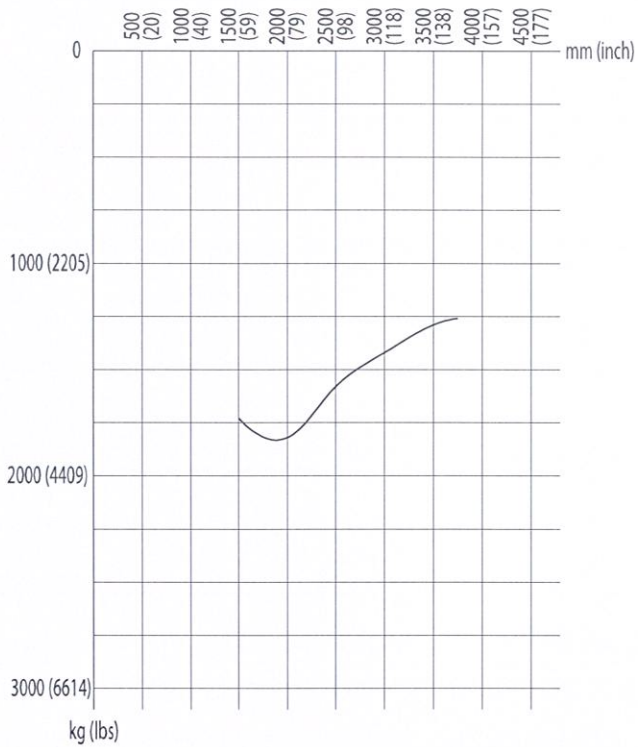
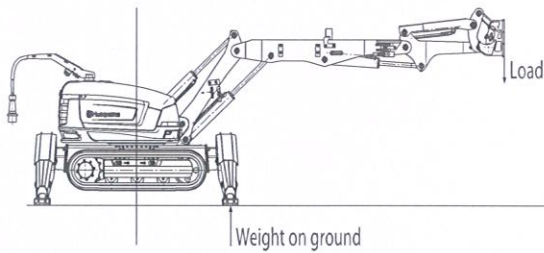
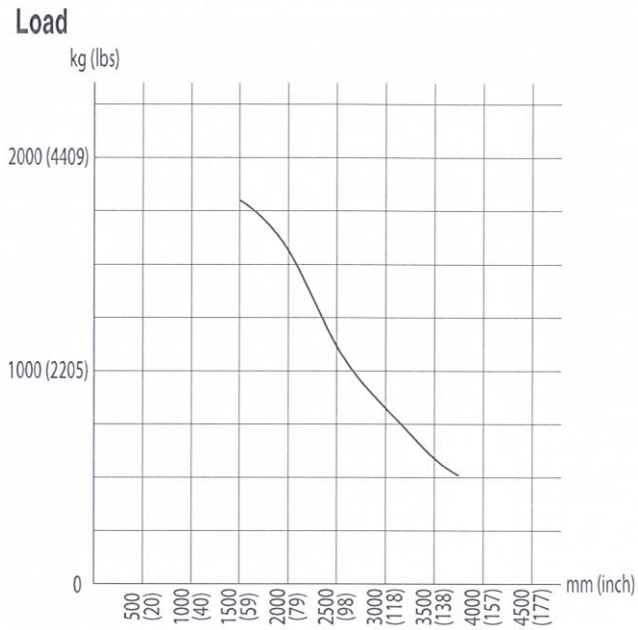
- Hydraulic feature P1 installed from factory
- Enhanced cooling P2 installed from factory
- Heat protection P3 installed from factory
- The outriggers are individually controlled, this combined with a large footprint provides superior stability enabling high workload on various surfaces.
- The bluetooth-operated remote control with user friendly interface makes it easy to read and control all parameters quickly.
- Gives good access to confined spaces and high manoeuvrability.
- The low height provides good views over the machine and the low centre of gravity contributes to a stable operation.
- The arm has a stable, durable design with low weight.
- For high durability and strength which enables high workload and efficiency.
- Thanks to the covers of the main body, which are easy to open and detach for fast servicing.
- Our tools are predefined in the menu for highest performance of the tools. You can set parameters for your own individual preferences as well as for the arm system.
- The casted baseplate has integrated lift bails.
- The remote control can be worn over the shoulder in an ergonomic bar.
- Thanks to the remote control you can control the job from a distance.
- The powerful and strong LED lights provide high working efficiency and good control of the work.
- No manual greasing means longer service intervals.

TECHNICAL SPECIFICATION	
Power	22 kW / 29.5 hp
Flow 50 / 60 Hz, l / min	75
System pressure, nominal max, Bar	200
System pressure, increased max, Bar	250
Pump type	Load sensing axial piston pump with variable displacement
Terminal	Portable remote control
Communication	Radio or cable
Radio	Industrial Bluetooth, class 1
Range, radio	Up to 100 m
Battery	High-capacity Li-ion
Reach (up/forward)	5.2 / 4.9 m / 204.72 / 192.91 inch
Control system	Modular, digital CAN-based PLC
Weight	1960 kg / 4320.99 lbs
Width, machine body, mm	780
Length, machine body, mm	2057 (incl. outriggers)
Height, machine body, mm	1035



# LOAD AND WEIGHT ON GROUND DIAGRAMS DXR300

1. On outriggers – forward DXR300 - weight on ground will appear on two outriggers.

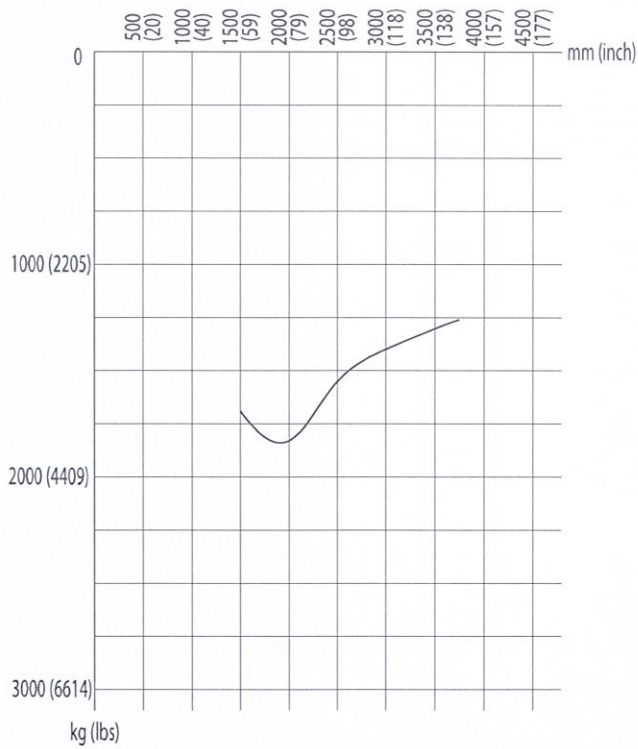
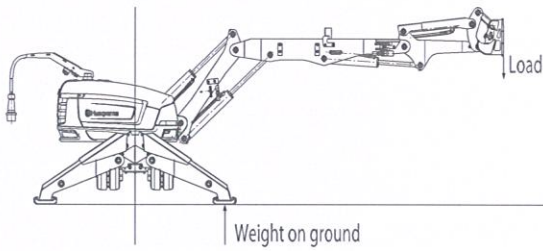
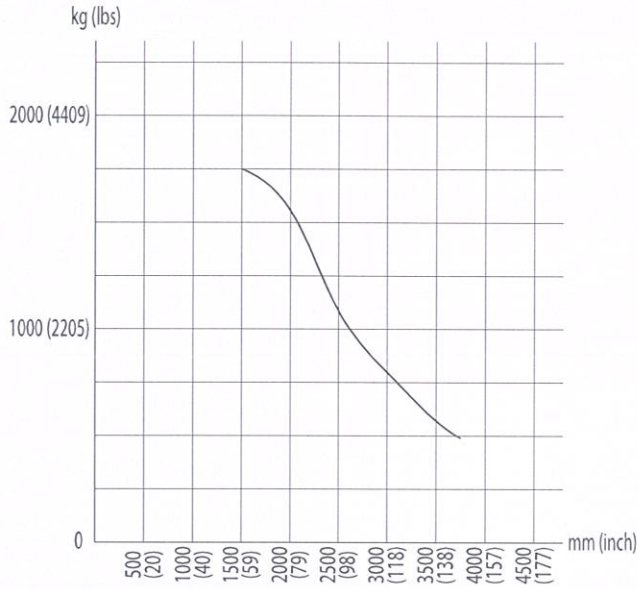




# LOAD AND WEIGHT ON GROUND DIAGRAMS DXR300

2. On outriggers – side DXR300 - weight on ground will appear on two outriggers.

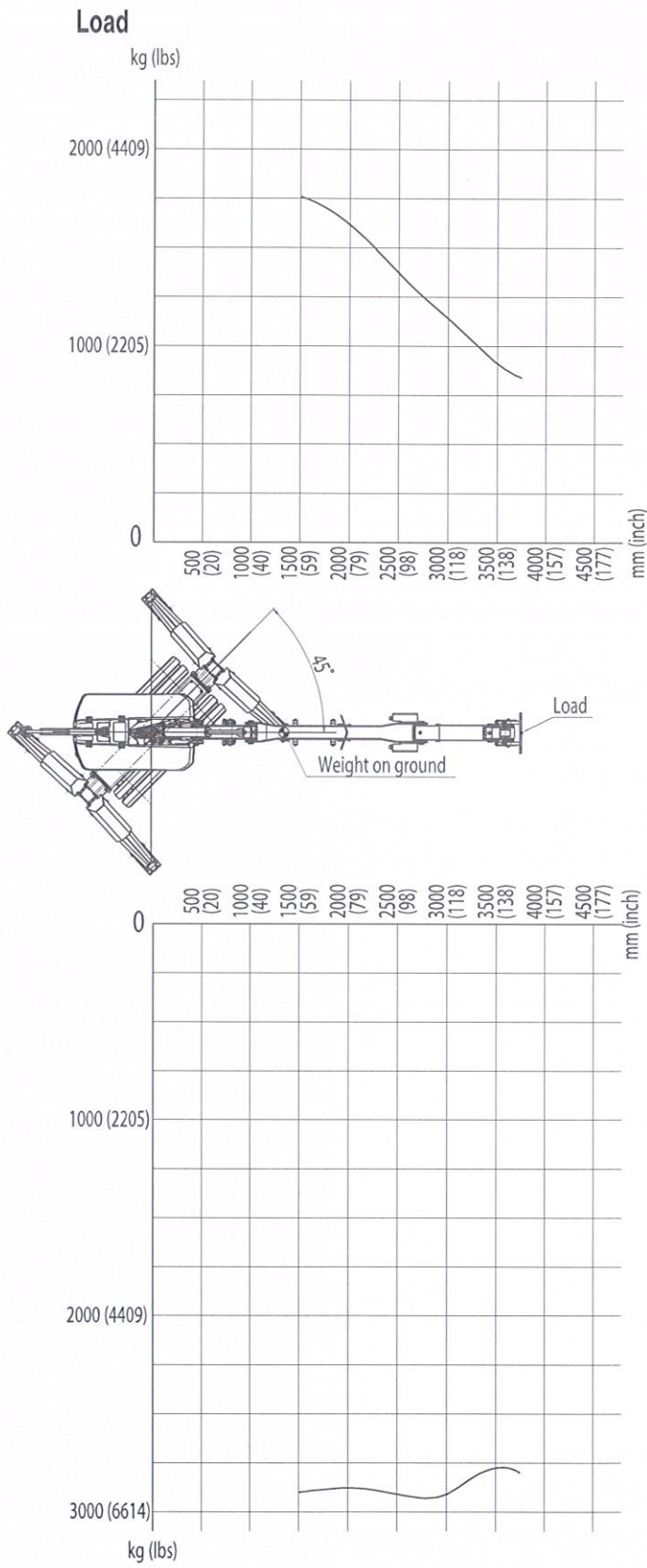
Load



Weight on ground

# LOAD AND WEIGHT ON GROUND DIAGRAMS DXR300

3. On outriggers – diagonal DXR300 - weight on ground will appear on single outrigger.

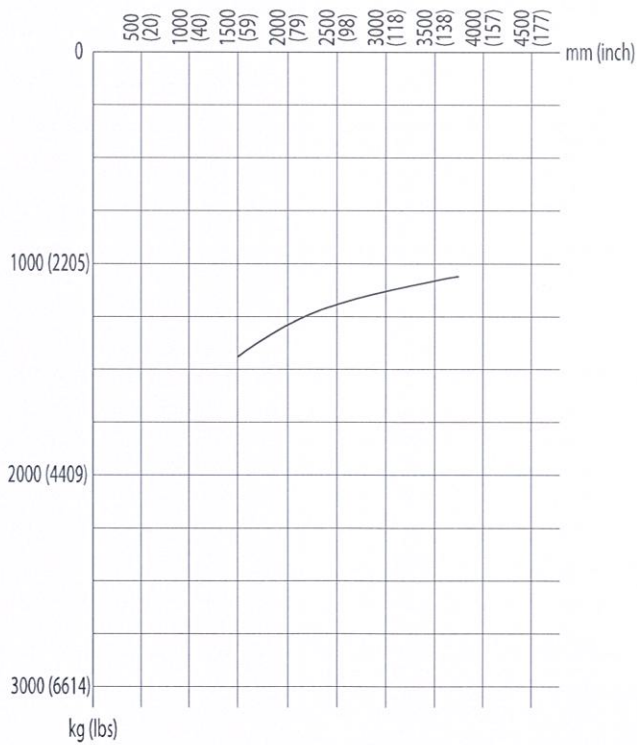
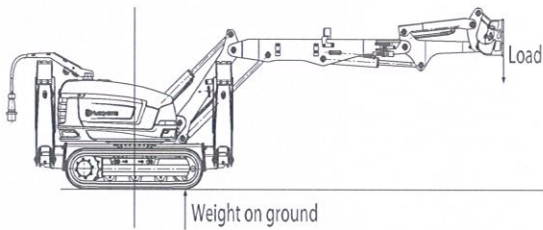
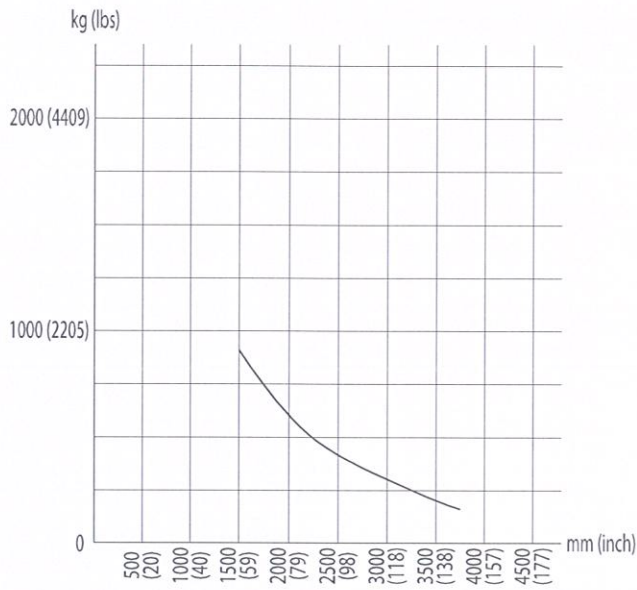


Weight on ground

# LOAD AND WEIGHT ON GROUND DIAGRAMS DXR300

## 4. On tracks - forward DXR300 - weight on ground will appear on front end of both tracks.

Load



Weight on ground

# GROUND PRESSURE

## Ground pressure

**NOTICE!** The content of this section is for the purpose of providing reference information only. Husqvarna assume no warranty or liability for its content or its correctness. Husqvarna will have no responsibility or liability for any damage arising as a result of any inaccuracy in the information provided herein. Any use of the information provided herein shall occur at the user's own risk.

- 1 Weight including hammer, divided on area enclosed by outrigger support points.
- 2 Weight including hammer, divided on track contact surface.
- 3 Max point load measured at tip over load, weight including hammer.

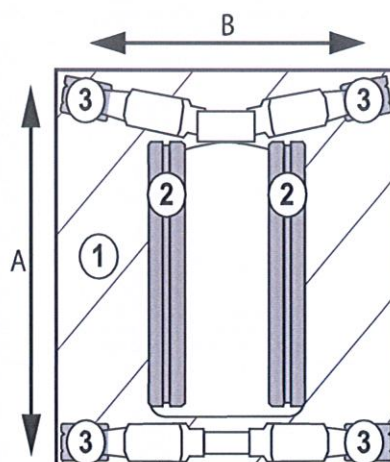
	1) Propagated load		2) Load from tracks		3) Max point load on outriggers	
	(kg/m <sup>2</sup> )	(lbs/ft <sup>2</sup> )	(kg/m <sup>2</sup> )	(lbs/ft <sup>2</sup> )	(kg)	(lbs)
<b>DXR140*</b>	458	94	4136	851	1158	2553
<b>DXR250**</b>	776	159	4903	1002	1863	4107
<b>DXR270**</b>	479	98	4152	845	1993	4394
<b>DXR300**</b>	530	108	4590	934	2203	4857
<b>DXR300***</b>	552	113	4781	973	2295	5060
<b>DXR310**</b>	544	111	4715	959	2263	4989

\*Breaker SB152, \*\*Breaker SB202, \*\*\*Breaker SB302

**NOTICE!** All values are static loads where numbers are subject to change without notice. Please consult with the engineer at the site. Husqvarna assumes no liability for accidents.

## Measurement contact surfaces

	1) A x B		2) A x B		3) A x B	
	(mm)	(inch)	(mm)	(inch)	(mm)	(inch)
<b>DXR140</b>	1610 x 1572	63,4 x 61,9	790 x 180	31,1 x 7,1	149 x 172	5,9 x 6,8
<b>DXR250</b>	1748 x 1371	68,1 x 54	828 x 230	32,6 x 9,1	177 x 151	7 x 5,9
<b>DXR270</b>	2071 x 2008	81,5 x 79	1044 x 230	32,6 x 9,1	149 x 172	5,9 x 6,8
<b>DXR300</b>	2071 x 2008	81,5 x 79	1044 x 230	32,6 x 9,1	149 x 172	5,9 x 6,8
<b>DXR310</b>	2071 x 2008	81,5 x 79	1044 x 230	32,6 x 9,1	149 x 172	5,9 x 6,8



**NOTICE!** All values are static loads where numbers are subject to change without notice. Please consult with the engineer at the site. Husqvarna assumes no liability for accidents.